

# MEAT

WRITTEN BY SETH CHRISTENSEN

**Synopsis:** A short horror film focused on the experiences of Lucas, an eighteen year old boy who moves to New Mexico to work in his Uncle's butcher shop, only to find that his uncle is a deranged murderer.

**General location for film:** SouthWest U.S./ New Mexico.



**Setting:** Interior and exterior of Lucas' ambiguously suburban house, New Mexico highway in the desert, interior and exterior of Frank's disheveled house amidst a tidy New Mexico suburb, Interior and exterior of Frank's butcher shop.

**Lucas' house:** Interior & exterior.



#ffffff

#a0a0a0

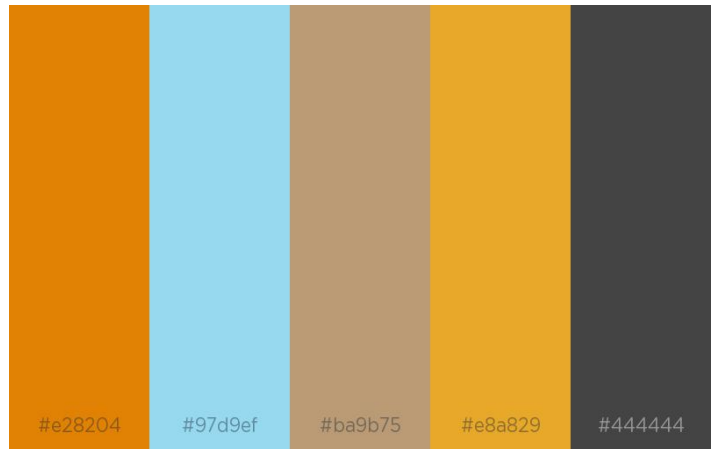
#9badb2

#b59c7e

#637f55

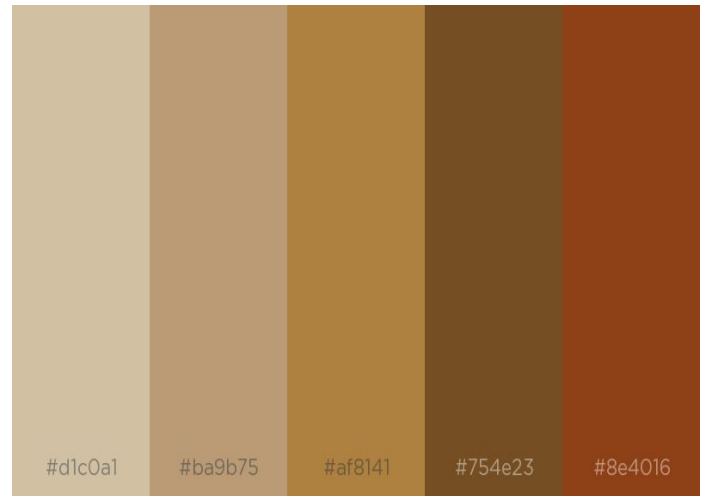
**Key descriptions:** Suburban, middle-class, domestic, residential, quiet.

**New Mexico highway: Exterior.**



**Key descriptions:** Rural, desert, isolated, rustic, desolate, highway, barren.

**Frank's House: Interior & exterior.**



**Key descriptions:** Old, creepy, handcrafted, outdated, worn-down, unkempt, dingy, shadowy.

## Frank's Butcher shop: Interior & Exterior.



**Key descriptions:** Old-fashioned, local business, down-to-earth, butcher, market, meat, slaughter.

## Wardrobe & characters

**Lucas, 18, Male:** Lucas is of a fair complexion, thin, and has long hair.



Long, messy hair.



Generally wears relaxed, comfortable and youthful clothing.



Wears fashionable yet relaxed clothing.

**Brian, Lucas' father, 45, Male:** Brian is relatively in shape for an older man, has grey hair, and looks distinguished.



Brian has messy hair, a beard, and stylish glasses.



Brian's clothes should make him look casual yet distinguished.



**Frank, Lucas' uncle, 55, male:** Frank is an overweight, bearded, and seemingly jovial butcher.



When not at work, Frank dresses conservatively.



Frank in his work apparel.



Although Frank appears to be jovial, he is simultaneously menacing.



**Lee, 35, male:** Lee is a heavily tattooed man who works at Frank’s butcher shop.



Lee is always dressed in his butcher apparel.



**Props:**



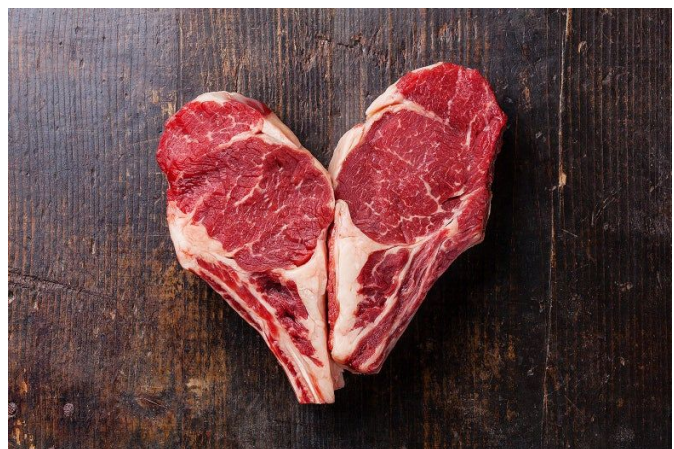
Meat processing boots.



Butcher's apron.



Garbage bags.



Meat.

**General themes:** Mental illness, dealing with traumatic experiences, experiencing betrayal.

**Films that inspire the tone, aesthetic, genre, and themes of this project:**



**Fargo season 2:** Crime drama.



**The Babadook:** Horror/thriller.



**The Shining:** Psychological horror.

